



Industrial Assessment Blueprint

Lead Maintenance



Test Code: 0639 / Version: 01

*"Enhancing Today's Workforce
Through Tailored Performance Solutions"*

Written Assessment:

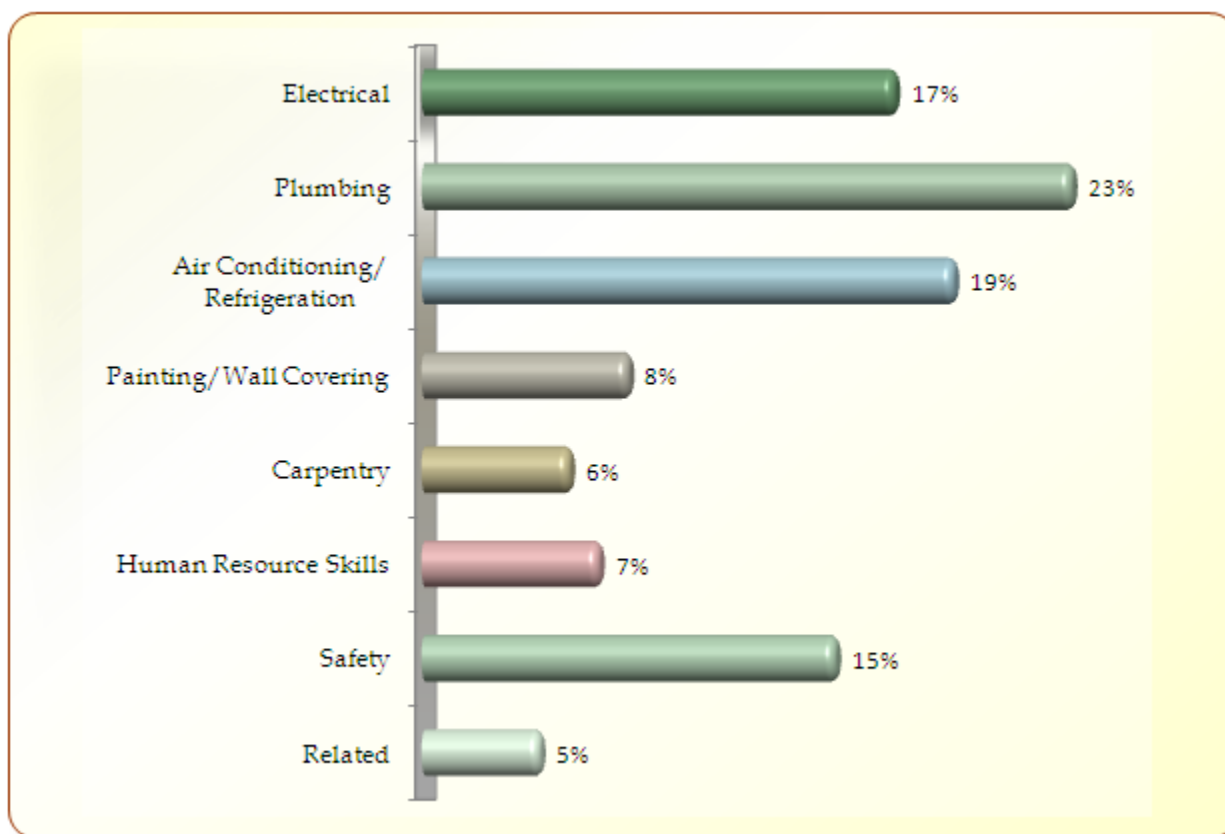
Assesses the theoretical concepts in the field of Lead Maintenance

Administration Time: 3 hours

Number of Questions: 88

Revision Date: 1996

Areas Covered:



Sample Questions:

Resistance is measured in

- A. coulombs
- B. volts
- C. farads
- D. ohms

In waste systems, the trap is used to

- A. prevent rodents from entering building
- B. prevent methane gas from entering building
- C. provide access for recovering valuable items
- D. prevent bathroom odor

Bubbles showing in a liquid indicator usually means that the system

- A. is full of air
- B. is short of refrigerant
- C. head pressure is too high
- D. head pressure is too low

It is best to store paint in

- A. airtight rooms with windows
- B. airtight rooms without windows
- C. well-ventilated rooms with windows
- D. well-ventilated rooms without windows

Glass should be put into a metal sash with

- A. caulking compound
- B. ordinary putty
- C. putty
- D. glazing compound

